

114,000 LITRE PRECAST POTABLE WATER CISTERN

WILKINSON HEAVY PRECAST LIMITED

DUNDAS, ONTARIO

1-800-263-8503

CONSTRUCTION DETAILS *

Concrete: 35 MPa at 28 Days, 5 to 8% Air Entrainment.

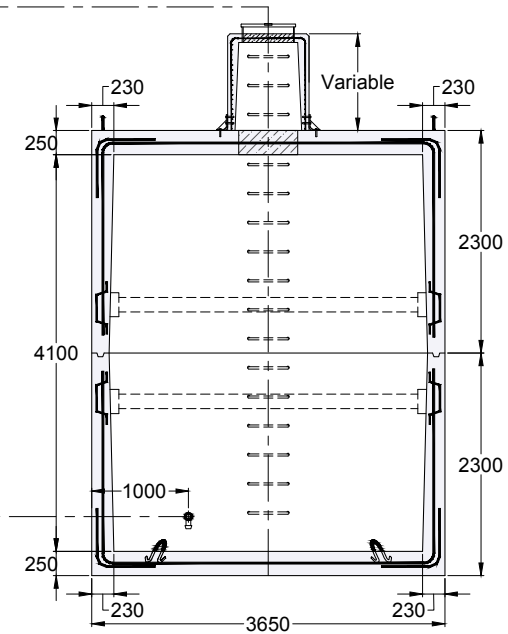
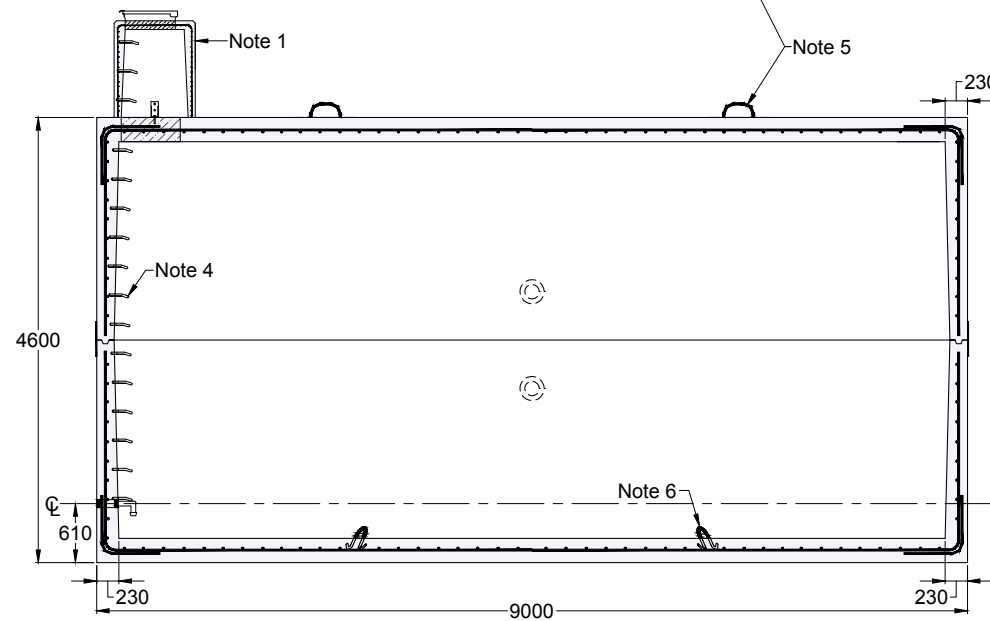
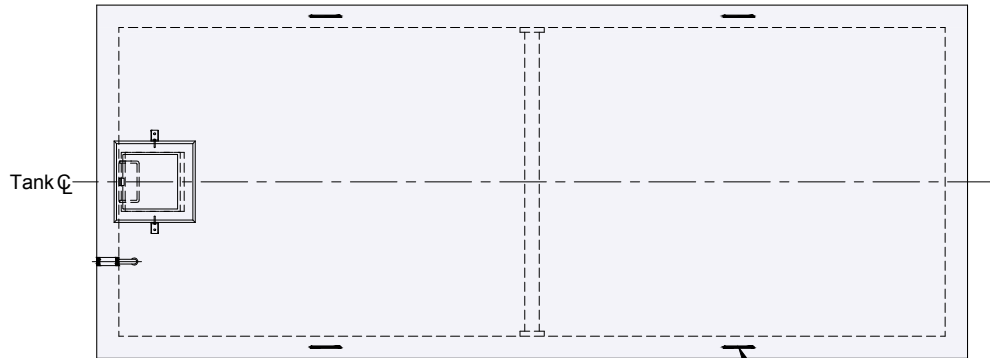
Reinforcing: 20 M bars at 200 mm centres each way in roof, walls and floor.
Eight extra 15 M bars around each roof access opening.
Minimum cover over reinforcing steel - 25mm.

Weight: Top Section 48,000 kg
Bottom Section 48,000 kg
Total 96,000 kg

Actual Capacity: 27,832 Litres Per Vertical Metre.
114,110 Litres to Underside of Roof.

NOTES

1. Cast in access riser with a 500 x 500 mm clear opening stainless steel lockable access hatch. Stainless steel riser extensions are available. Please contact the factory regarding the many different and accessories that are available.
2. Close tolerance tongue and groove joint and fibrous non-toxic mastic sealant ensures a solid watertight seal. Primer and Mastic Band are supplied with each tank for application to the external surface of the tank over the joint between sections. This band is to be applied by the installing contractor.
3. Knockouts suitable for the grout connection of a 100 mm diameter pipe.
4. Polyethylene coated aluminum ladder rungs to the floor.
5. Top section lifting points four places.
6. Bottom section lifting points four places.



Dimensions in mm
N.T.S.

*Product designed for a Maximum 1.5 Metre burial over the top slab in firm soil away from any area of vehicular traffic.

For recommended installation procedures refer to Wilkinson