

PRECAST WASH/SUMP PIT

WILKINSON HEAVY PRECAST LIMITED

DUNDAS, ONTARIO

905-628-5611

www.wilkinsonheavyprecast.com

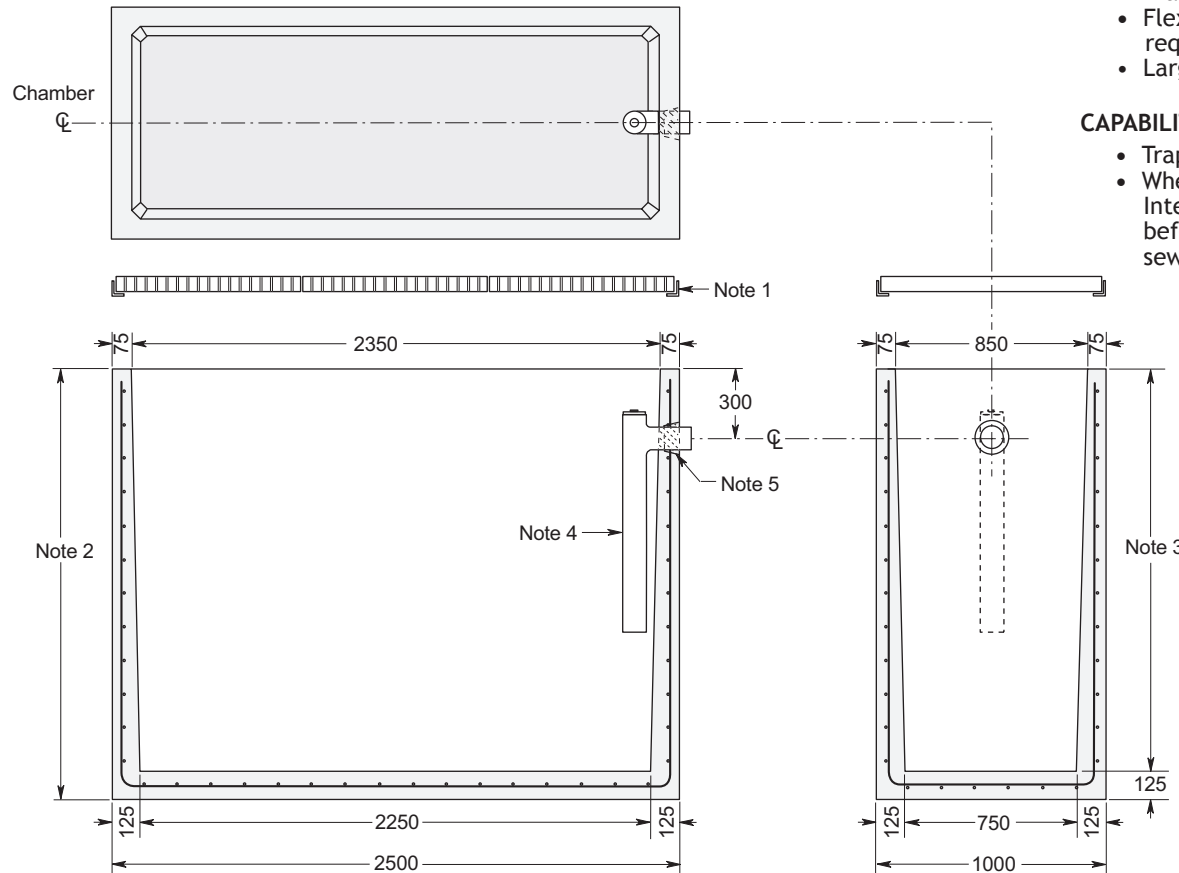
CONSTRUCTION DETAILS *

Concrete: 35 MPa at 28 Days, 5 to 8% Air Entrainment.

Reinforcing: 10 M bars at 150 mm centres each way in walls and floor.
Minimum cover over reinforcing steel - 25 mm.

Weight (Concrete Only):
1.9 M - 3725 kg
1.5 M - 2865 kg
1.2 M - 2275 kg

Actual Capacity: 1725 Litres per Vertical Metre.



NOTES

1. Galvanized steel Angle Frame with Grating suitable for passenger traffic areas (optional).
2. Available in heights of 1.9, 1.5 and 1.2 M.
3. Available in heights of 1.775, 1.375 and 1.075 M.
4. 100 mm diameter PVC Baffle with Cleanout (optional).
5. Pipe connection suitable for 100 mm diameter PVC or ABS pipe.

FEATURES

- Various types and designs of grating available.
- Frame cast with top perimeter of the unit or available separately.
- Flexible water tight pipe/wall connectors to suit project requirements.
- Large open design facilitates removal of accumulated sediment.

CAPABILITIES

- Traps heavy sediment and grit.
- When used in conjunction with various models of Wilkinson Oil Interceptors the final effluent needs minimal further treatment before being recycled or discharged directly into a municipal sewer.

APPLICATIONS

- Car Washes.
- Heavy Equipment Wash Areas.
- Processes where floor catchment sumps are required.

Dimensions in mm
N.T.S.

* Commensurate with burial in firm soil under an area of passenger vehicle traffic.
Please consult with the factory before specifying this product for use in an area of heavy wheel loading.

WARNING ! IMPROPER INSTALLATION ESPECIALLY IN UNSTABLE SOILS CAN RESULT IN THE STRUCTURAL FAILURE OF THIS PRODUCT