

## PRECAST FLOOR PIT

WILKINSON HEAVY PRECAST LIMITED

DUNDAS, ONTARIO

905-628-5611

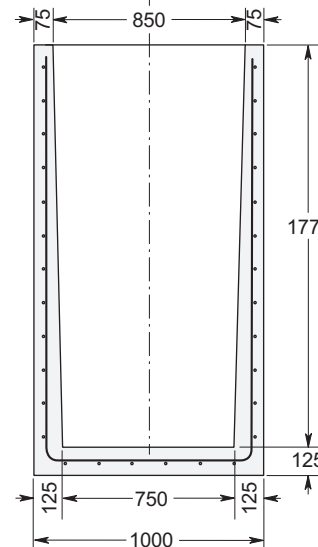
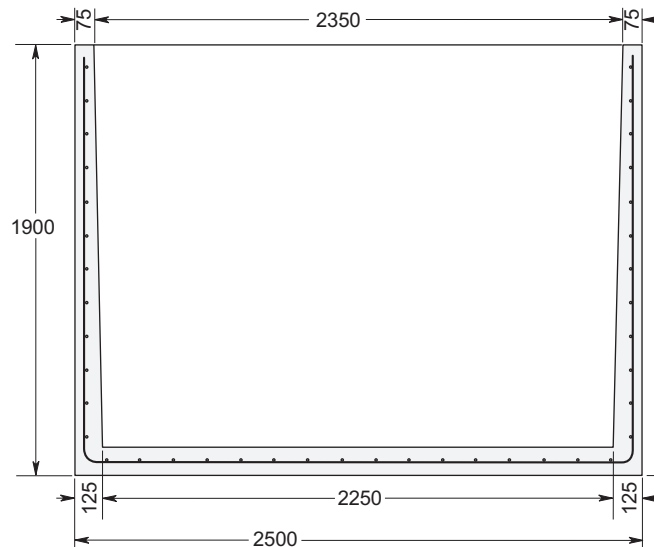
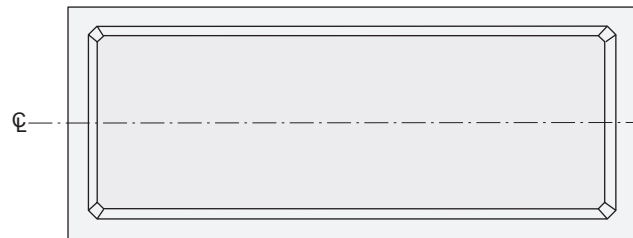
[www.wilkinsonheavyprecast.com](http://www.wilkinsonheavyprecast.com)

### CONSTRUCTION DETAILS \*

**Concrete:** 35 MPa at 28 Days, 5 to 8% Air Entrainment.

**Reinforcing:** 10 M bars at 150 mm centres each way in walls and floor.  
Minimum cover over reinforcing steel - 25 mm.

**Weight:** 3725 kg (Concrete Only)



### FEATURES

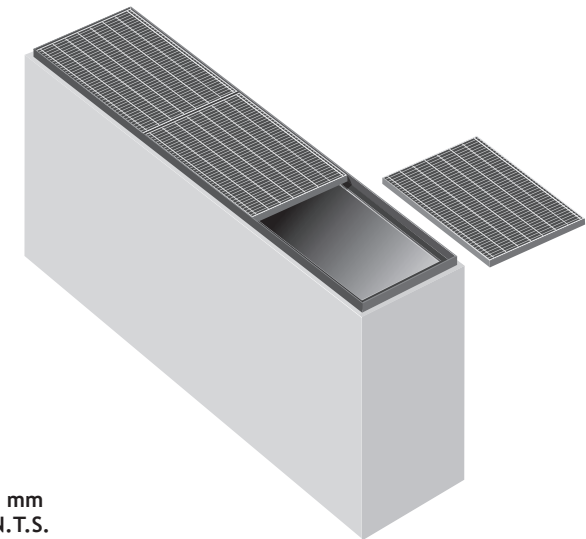
- Various types and designs of grating available.
- Frame cast with top perimeter of the unit or available separately.
- Flexible water tight pipe/wall connectors to suit project requirements.
- Large open design facilitates removal of accumulated sediment.

### CAPABILITIES

- Traps heavy sediment and grit.
- When used in conjunction with various models of Wilkinson Oil Interceptors the final effluent needs minimal further treatment before being recycled or discharged directly into a municipal sewer.

### APPLICATIONS

- Car Washes.
- Heavy Equipment Wash Areas.
- Processes where floor catchment sumps are required.



Dimensions in mm  
N.T.S.

\* Commensurate with burial in firm soil under an area of passenger vehicle traffic.  
Please consult with the factory before specifying this product for use in an area of heavy wheel loading.

**WARNING ! IMPROPER INSTALLATION ESPECIALLY IN UNSTABLE SOILS CAN RESULT IN THE STRUCTURAL FAILURE OF THIS PRODUCT**